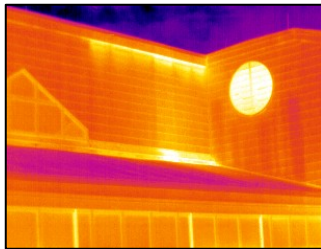




BUILDING SHELL COMMISSIONING – CRISIS INTERVENTION



Building Type:
Elementary School

Scope of Work:
Building Shell
Commissioning

Location: New
England

Initiated by the collapse of part of the school roof, Turner Building Science & Design, LLC was contracted to perform a complete investigation of both the building shell and the mechanical systems of an elementary school, located in New England.

Building shell commissioning services provided included: Dew Point / Vapor Pressure Review of existing wall and roof assemblies, Exterior Drainage Plane / Wind Barrier Review, Interior Air Barrier / Vapor Barrier Review, Exhaust Re-entrainment Review (Micro Climate Analysis), Thermal Performance Continuity Review, Roof Ice Dam Review, Infrared Imaging of Buildings as Found, Infrared Imaging with Building Pressure Manipulation, Infrared Imaging and Visual Observations to Locate Moisture Infiltration/Leakage into the Thermal Envelope, Field Determination of Water Penetration of Installed Exterior Windows, Skylights, Doors, Curtain Walls, and Wall Assemblies, Field Determination of Exhaust Impacts on Air Intakes or Impact of Sewer Gas Leakage, Concrete Floor Moisture Emission Testing.

